

# POWER MAN ALABAMA MULTISPORT WEEKEND



MARCH 27 & 28, 2010  
OAK MOUNTAIN STATE PARK  
XTERRA RUN COURSE  
FIRST RUN- 8K  
&  
OFF-ROAD TRAIL RUN



Start Southwest on Terrace Dr  
Right onto Lake Trail (blue)  
Continue on Lake Trail (yellow)  
*Clockwise Direction*

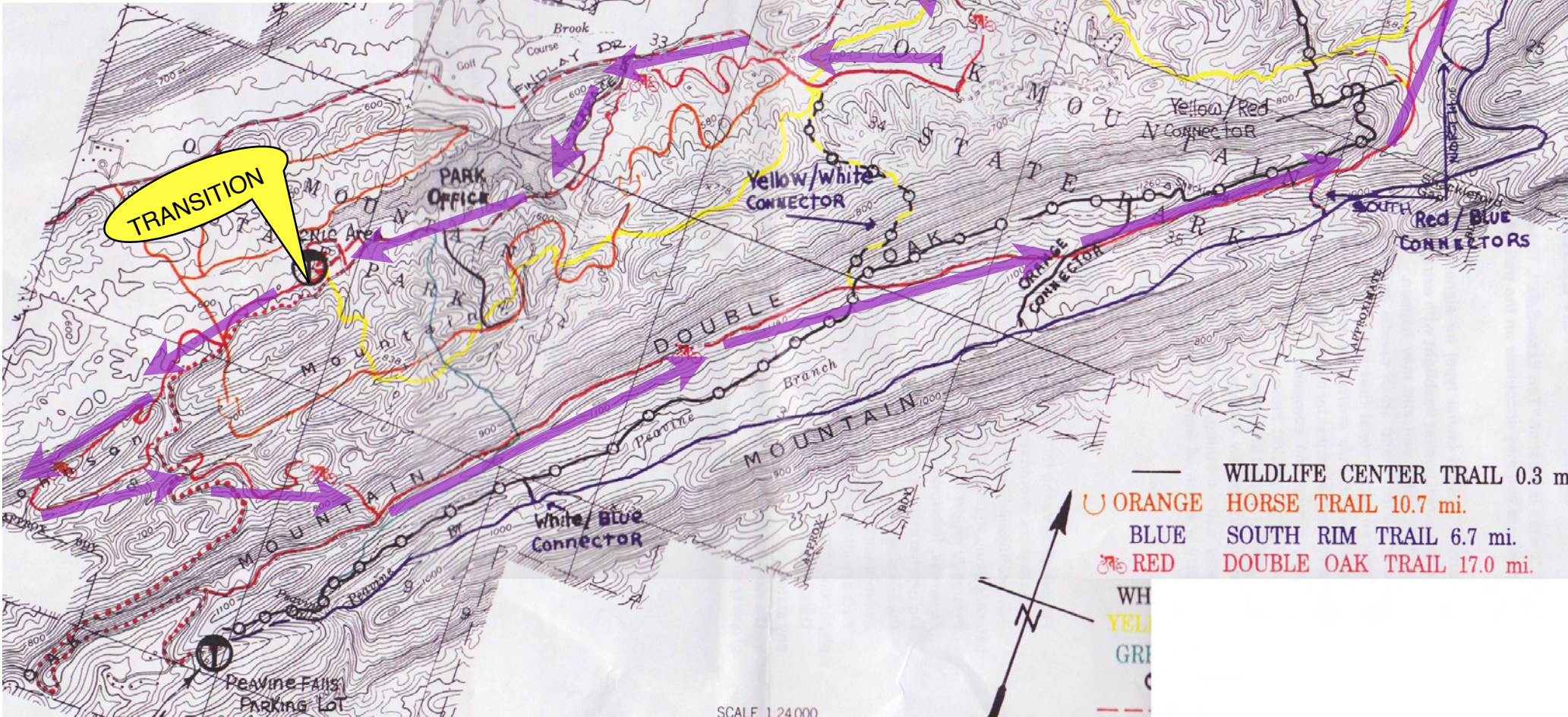
Start/Finish  
Transition Area



[www.team-magic.com](http://www.team-magic.com)



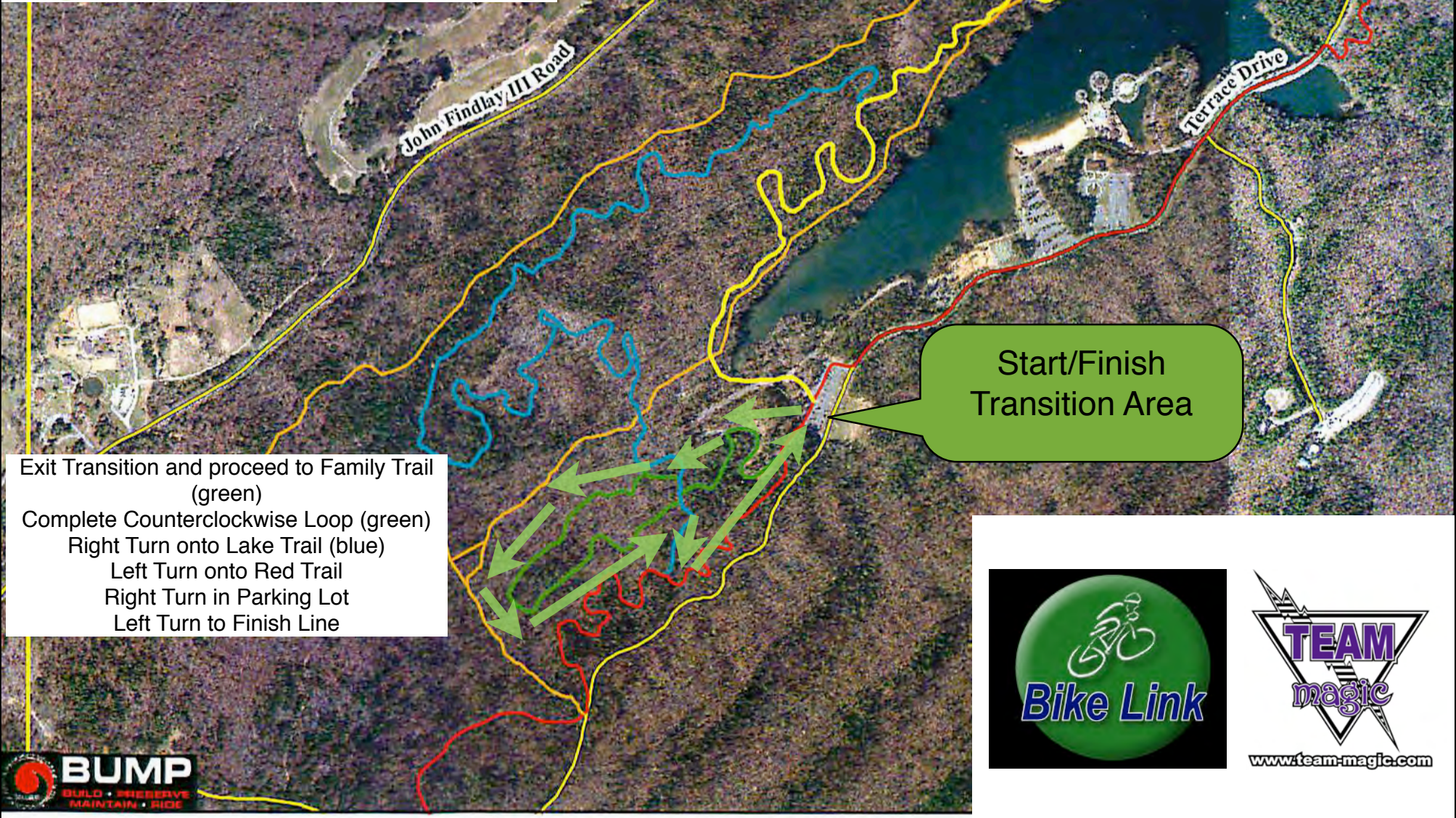
**XTERRA DUATHLON  
BIKE COURSE  
17MI  
COUNTERCLOCKWISE**



# POWER MAN ALABAMA MULTISPORT WEEKEND



**MARCH 27 & 28, 2010**  
**OAK MOUNTAIN STATE PARK**  
**XTERRA RUN COURSE**  
**SECOND RUN- 2K**



Start/Finish  
Transition Area

Exit Transition and proceed to Family Trail (green)  
Complete Counterclockwise Loop (green)  
Right Turn onto Lake Trail (blue)  
Left Turn onto Red Trail  
Right Turn in Parking Lot  
Left Turn to Finish Line

